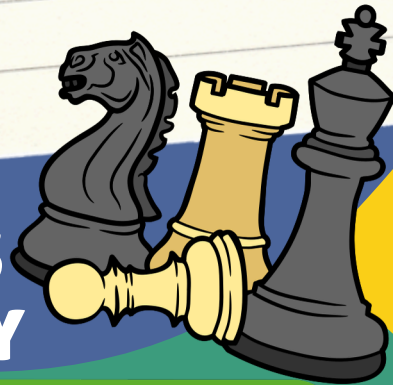




After School Chess Program



**3rd – 5th GRADERS
EVERY WEDNESDAY**

8 WEEK PROGRAM

**January 14th –
March 4th
5:00 – 6:00 PM**

\$239.99/Student



Why Chess?

Strengthens & Develops:

- ✓ Strategic Thinking
- ✓ Abstract Reasoning
- ✓ Pattern Recognition
- ✓ Discipline
- ✓ Sportsmanship

Activities

- ✓ Lessons
- ✓ Tournaments
- ✓ Critical Thinking
- ✓ Game Variations
- ✓ Chess puzzles!



FOR MORE INFO CONTACT:

noahchambers@scholarschessguild.com



After-School Chess Program FAQ

What if my child has never played chess?

No experience? No problem! We welcome beginners and teach them step by step. From learning how the pieces move to playing their first full game, our instructors make sure every child feels comfortable and confident as they learn.

Is the atmosphere competitive?

Our focus is on growth and fun first. While students do play games against one another, the emphasis is on learning, practicing good sportsmanship, and enjoying the process. Advanced players may have opportunities for tournament-style play, but competition is always friendly and age-appropriate.

Will there be any opportunities for 1-on-1 coaching?

Yes. While most learning happens in small groups, instructors also provide individual attention during sessions. For families interested in more personalized coaching, private lessons outside of the regular program are also available (please ask us for details).

Are the instructors background checked?

Absolutely. The safety of your child is our top priority. Every instructor undergoes a thorough background check and training process before leading a class.

How many students will be in a class/group, and how many instructors?

Our chess classes are kept at a medium size – typically 10 to 20 students per group. This range allows us to create a lively, engaging atmosphere where students learn from playing with different peers, while still keeping class sizes manageable enough for instructors to give personal guidance.

Each group is led by a trained instructor, with additional support as needed, so every child gets both the benefit of a social learning environment and the individual attention they need to grow.